

**FEATURES**

- Universal AC input
- Short Circuit, Output Overload and Over Voltage Protection
- LED Indicator for output ON
- Convection cooled
- 100% full load burn-in test
- Conformal coating on PCBAs to protect against common dust and pollutants
- Slim profile for DIN-rail mounting

APPLICATION

- Industrial Control System
- Factory Automation
- Electromechanical apparatus

MODEL INFORMATION

Model Number	Output Voltage	Output Current	Mounting Style
LESP100D12	12V	8.5A	Din Rail Mounting
LESP100D24	24V	4.5A	Din Rail Mounting

ORDER INFORMATION

LE S A 100 <input type="checkbox"/> X <input type="checkbox"/> Y	
LE	Lubi Electronics
S	Single Output
P	Series
100	Total Power
<input type="checkbox"/> X	D = Din Rail Mounting
<input type="checkbox"/> Y	Output Voltage : 12, 24

INPUT SPECIFICATIONS

AC Input Voltage	100 ~ 264VAC, 50/60Hz
AC Input Current	0.95A/115V AC 0.56A/230V AC
DC Input Voltage	140 ~ 373VDC
Max Inrush Current	40A COLD START
Leakage Current	<0.75mA/240V AC

OUTPUT SPECIFICATIONS

MODEL NUMBER	LESP100D12	LESP100D24
Output Voltage	12V	24V
Output Current	8.5A	4.5A
Output Power	100W	100W
Output Voltage Adj. Range	10.2~13.8V	21.6~28.8V
Efficiency	85%	85%
Line Regulation	±0.50%	±0.50%
Load Regulation	±1%	±1%
Ripple / Noise	120mVpp	150mVpp
Setup Time / Rise Time	1000ms, 30ms/230VAC	
Hold Time	30ms/230VAC	
Indicator	Green LED	

PROTECTION

Short Circuit	Shut Down Output Voltage, Re-power On To Recover	
Over Load	110~140% Rated Output Power	
	Protection type : Hiccup mode, recovers automatically after fault condition is removed	
Over Voltage	13.8~16.2V	28.8~33.6V
	Protection type : Hiccup mode, recovers automatically after fault condition is removed	

ENVIRONMENT

Storage Temp./Humidity	-40 ~ +85°C, 10~95% RH
Working Temp./Humidity	-20 ~ +50°C, 20~90% RH non-condensing

SAFETY

Isolation Resistance	I/P-O/P, I/P-FG, O/P-FG:>100M Ohms / 500VDC / 25 °C/ 70% RH
Withstand Voltage	I/P-O/P:3KVAC I/P-FG:2KVAC O/P-FG:0.5KVAC

MECHANICAL DIMENSION

Case Chassis / Cover	Plastic
Dimension	100 x 55 x 90mm (±1.0mm Tolerance)
Terminal	3 Pins

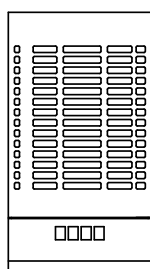
Note :

1. Instruction for Installation in a pollution degree 2 environment. \square Equipment of overvoltage category II
2. Ripple & Noise are measured at 20MHz by using 300mm twisted pair of load wires terminated with 0.1uF, 100V Film Capacitor parallel with 47uF Electrolytic Capacitor

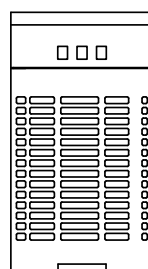
MOUNTING DRAWING

Panel Mounting

- LESP100D12
- LESP100D24



TOP VIEW



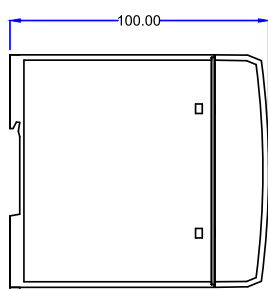
BOTTOM VIEW

Terminal Pin No. Assignment (TB1)

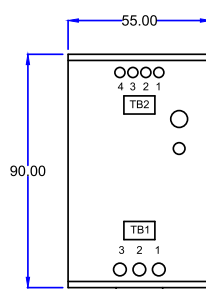
Pin No.	Assignment
1	FG \oplus
2	AC/N or DC -
3	AC/L or DC +

Terminal Pin No. Assignment (TB2)

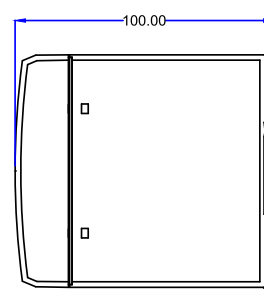
Pin No.	Assignment
1,2	DC OUTPUT -V
3,4	DC OUTPUT+V



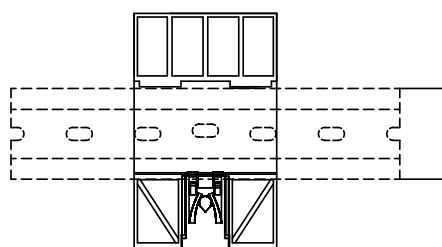
SIDE VIEW



FRONT VIEW



SIDE VIEW



BACK VIEW